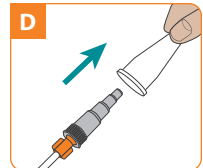
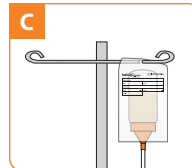
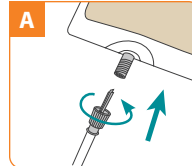


## Priming and Loading the Disposable Set

**These instructions are not a substitute for the operator's manual.** Be sure to read the operator's manual thoroughly prior to operating the pump. See other side for pump operation instructions.

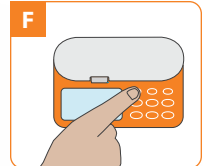
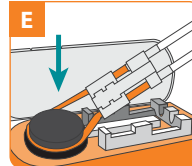
### STEP 1

- If you are using the Infinity Spike set, remove protective cover from connector and insert connector tip into compatible port on the enteral formula container (image A). Secure the connector by tightly screwing threaded components together.
- If you are using the 100 mL, 500 mL, or 1200 mL disposable set, hold the bag's funnel upright and pour in feeding formula. Close cap tightly and hang bag (image B).
- If you are using the Screw Cap delivery set, fill a feeding bottle/container with a 440 mm opening and secure it to the screw cap. Please the bottle into the suspension bag and secure the bag to an IV pole (image C).



### STEP 2

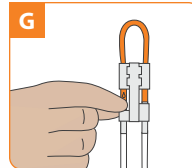
Remove protective cover from the feeding tube connector (image D).



### STEP 3 - PRIMING

**IF PUMP PRIMING:** Loop the silicone tubing around the pump wheel stretching lightly. Seat cassette into the pump and close the door (image E).

Turn pump on by pressing and holding the **ON/OFF** key until the pump beeps (image F). Then, press and hold the **PRIME** key until formula reaches the feeding tube connector.



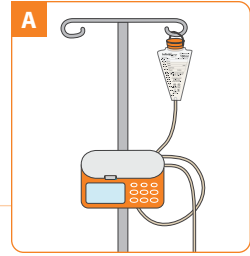
**IF MANUAL PRIMING:** Gently pinch orange colored tubing below the "🔥" symbol (image G). While pinching, gently squeeze the bag at the same time to assist fluid flow. Hold this position until formula reaches the feeding tube connector.

Loop silicone tubing around pump wheel stretching lightly. Seat cassette into pump (image E). Close pump door.

**FOR BACKPACK USE:** Turn the bag upside down and tilt the bag to keep air at tubing port (image H). Gently pinch orange colored tubing below the "🔥" symbol (image G). While pinching, gently squeeze the bag at the same time to assist fluid flow. Hold this position until formula reaches the feeding tube connector.

# Programming and Running the Pump

**These instructions are not a substitute for the operator's manual.** Be sure to read the operator's manual thoroughly prior to operating the pump. See other side for pump operation instructions.



<b>Hang the feeding container</b>	Hang feeding container so that the bottom of the bag is at or above the level of the pump door (image A).	
<b>Turn on the pump</b>	Press and hold the <b>ON/OFF</b> key for 1.5 seconds to turn the pump on. The display will show the last programmed rate.	
<b>To program the rate (how fast your pump runs)</b>	Press the <b>RATE/DOSE</b> key to display "RATE" in the lower-left corner of the screen. Use the <b>+</b> and <b>-</b> keys to program the rate.	
<b>To program the dose (how much is to be fed)</b>	Press the <b>RATE/DOSE</b> key to display "DOSE" in the lower-left corner of the screen. Use the <b>+</b> and <b>-</b> keys to program the dose.	
<b>To set the food type (what type of food is being fed)</b>	Press the <b>FOOD TYPE</b> key to display the type of food to be delivered. Press the <b>+</b> and <b>-</b> keys to change between formula and human milk.	
<b>Start the pump</b>	Press the <b>RUN/PAUSE</b> key to start the pump.	
<b>When feeding is complete</b>	When feeding is complete, press the <b>ON/OFF</b> key for 1.5 seconds to turn the pump off.	
<b>To clear settings</b>	Press the <b>CLEAR</b> key to reset the displayed value. Press and hold the <b>CLEAR</b> key for 3 seconds to reset rate, dose, and volume delivered values at the same time.	
<b>View volume delivered</b>	Press the <b>VOL/TOTAL</b> key once to display volume delivered for the current feeding. Press the key again to display the total cumulative volume delivered since the total volume was last reset.	

NOTE: If pump is turned off and turned back on again, the volume delivered counter resets to 0 and food type resets to formula. Rate, dose, and food type must be confirmed before restarting the pump with a new feeding.

NOTE: Any changes to pump settings (except food type) during a feeding cycle will cause pump to start a new feeding; it will not start where it left off. Rate, dose, and food type must be confirmed by viewing each parameter before restarting the pump.



ed trademarks of ZeveX, Inc. Moog® is a registered trademark of Moog, 4 ZeveX Park Lane, Salt Lake City, UT 84123 USA. LS-29744-001 Rev. E



To Purchase, Visit [Avobus.com](http://Avobus.com) or call [1-800-674-3655](tel:1-800-674-3655)