



# Dash 3000, 4000 & 5000

High-acuity mobile patient monitoring



To Purchase, Visit [Avobus.com](http://Avobus.com) or call [1-800-674-3655](tel:1-800-674-3655)

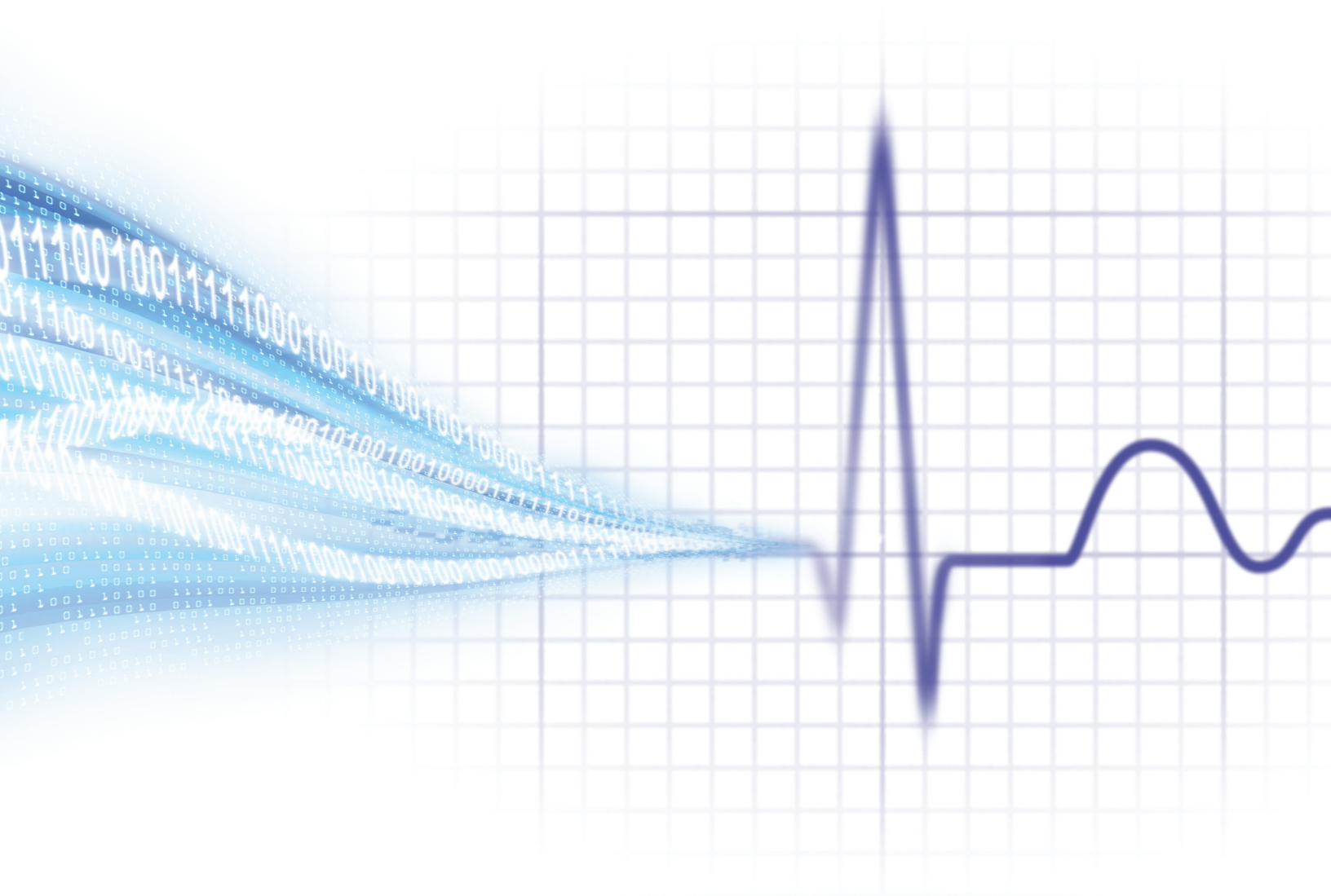
## The promise of flexibility.

In healthcare, every patient's situation is unique. To deliver personalized, quality care, you require information that is relevant and specific to each individual.

With the Dash\* 3000, 4000 and 5000 monitors from GE Healthcare, you can adapt to each patient's monitoring needs in virtually every high-acuity situation. Versatile, modular and portable, Dash monitors address Clinical Information Logistics\* by helping enable you to put the right monitoring solution in the right place at the right time. Dash monitors provide excellent clinical intelligence—when you need it—to help you make informed care decisions.

## A monitor for every setting.

The Dash family of monitors provides flexibility in a single platform. With a comprehensive set of clinical parameters, Dash monitors capture vital patient measurements while sophisticated algorithms help prevent false alarms. Dash monitors are highly configurable, enabling you to add features and parameters accommodating varying acuity levels for patients across the care continuum. From presentation in the Emergency Department to surgery in the OR to recovery in the PACU, treatment in the ICU and transfer to the Stepdown unit, the Dash monitor is an excellent choice for every point of care.



**Dash monitors** are intra-hospital transportable with optional batteries that last up to five hours and can be swapped out without interruption. This mobile flexibility, plus a built-in wireless option, enables you to monitor ambulatory patients or transform any bed into a monitored bed. Dash monitors provide a continuous stream of patient data, enabling a personalized information workflow that supports quality care decisions.

## Mobility without compromise.

Dash monitors offer a high-performance, modular monitoring solution that provides full clinical parameter monitoring—even during intra-hospital transport. Its rugged, lightweight design makes it easy for caregivers to handle and its optional wireless capability offers the freedom and flexibility to monitor patients in virtually any care setting, no matter their acuity.

An integrated wireless LAN option is available for Dash monitors, maintaining a connection to the CARESCAPE\* Network and the CARESCAPE CIC Pro central station. Dash monitors in the unique Combo/Rover mode, combined with the ApexPro\* telemetry system, enable wireless ECG monitoring. Dash monitors are designed for integration into commonly utilized existing wireless networks, helping you leverage your investment in your current IT infrastructure.



### Dash 3000

The Dash 3000 patient monitor is robust and lightweight with an 8.4-inch display.

### Dash 4000

The full featured Dash 4000 monitor offers a 10.4-inch screen and is a complete portable bedside monitoring solution.



To Purchase, Visit [Avobus.com](http://Avobus.com) or call [1-800-674-3655](tel:1-800-674-3655)



**Dash 5000**

The user-friendly Dash 5000 sports a larger 12.1-inch display for easier readability and quick key functionality for most commonly used functions.



## A Dash of clinical excellence.

The Dash 3000, 4000 and 5000 monitors incorporate innovative data acquisition and analysis programs that help prevent false alarms and help you accurately identify, diagnose and treat monitored patients with speed and precision.

Dash monitors are available with a comprehensive set of advanced parameters that can be adapted to virtually any care setting.



- GE EK-Pro arrhythmia program uses simultaneous multi-lead ECG analysis across four leads to accurately detect arrhythmias.
- Innovative InetlIRate\* algorithm helps reduce false alarms by evaluating key data from multiple parameters before triggering an alarm.
- GE DINAMAP\* blood pressure algorithms support speed, comfort and artifact rejection while retaining a high standard of accuracy.
- GE-exclusive atrial fibrillation detection algorithm provides alarm- and time-based trending to indicate the state of atrial fibrillation.
- Up to four invasive blood pressure readings with a Smart BP artifact rejection program help reduce false alarms.
- Proprietary TruTrak+\* SpO<sub>2</sub> motion algorithm identifies, quantifies and corrects clinical patient motion.

With the Dash family of monitors, you have clinical excellence and flexibility to help capture, deliver and present relevant patient information at the right time and place. As part of a complete solution for managing Clinical Information Logistics, Dash monitors are an essential component for helping providers perform at the highest levels.



To Purchase, Visit [Avobus.com](http://Avobus.com) or call [1-800-674-3655](tel:1-800-674-3655)

© 2011 General Electric Company – All rights reserved.

General Electric Company reserves the right to make changes in specifications and features shown herein, or discontinue the product described at any time without notice or obligation. Contact your GE Representative for the most current information. Always consult the user manuals for detailed specifications and use information.

\*GE, GE Monogram, ApexPro, CARESCAPE, Clinical Information Logistics, Dash, DINAMAP, IntelliRate and TruTrak+ are trademarks of General Electric Company.

GE Medical Systems Information Technologies, Inc., doing business as GE Healthcare.

## About GE Healthcare

GE Healthcare provides transformational medical technologies and services that are shaping a new age of patient care. Our broad expertise in medical imaging and information technologies, medical diagnostics, patient monitoring systems, drug discovery, biopharmaceutical manufacturing technologies, performance improvement and performance solutions services help our customers to deliver better care to more people around the world at a lower cost. In addition, we partner with healthcare leaders, striving to leverage the global policy change necessary to implement a successful shift to sustainable healthcare systems.

Our “healthymagination” vision for the future invites the world to join us on our journey as we continuously develop innovations focused on reducing costs, increasing access and improving quality and efficiency around the world.

GE Healthcare  
8200 West Tower Avenue  
Milwaukee, WI 53223  
U.S.A.

GE Healthcare Finland Oy  
Kuortaneenkatu 2  
00510 Helsinki  
Finland

GE Healthcare  
3/F Building # 1,  
GE Technology Park  
1 Hua Tuo Road  
Shanghai 201203  
China

[www.gehealthcare.com](http://www.gehealthcare.com)



To Purchase, Visit [Avobus.com](http://Avobus.com) or call [1-800-674-3655](tel:1-800-674-3655)